

THE WISCONSIN INDEPENDENT

Newsletter of the Wisconsin Association of Independent Colleges and Universities (WAICU)

SPRING 2021 VOL. 53 NO. 1



INDEPENDENT INSIGHTS

Proposed increase to Wisconsin Grants funding

Governor Tony Evers recently announced his proposed state budget for the coming biennium which begins on July 1, 2021. He is recommending a 10 percent increase in funding for the Wisconsin Grants program for the first year of the coming biennium and another 10 percent for the second year of the biennium. Wisconsin Grants are the primary means-tested student aid program for Wisconsin students attending a Wisconsin public or private nonprofit college or university. Governor Evers is to be commended for his recognition of the importance to our state of increasing educational attainment.

Wisconsin is at a pivotal point. What we do now will affect the state's workforce and economy for decades to come. It is no secret that birthrates have been declining

while the cohort of individuals of retirement age is growing; already there are shortages of physicians, engineers, and teachers. Wisconsin will be in a 'world of hurt' if we do not increase educational attainment of all populations, including those who have been left behind. Across all WAICU members, nearly a third of students are considered low income[1]. We know student need is great and growing.

Because of the pandemic some students have dropped out; others have stopped out. Because students and their families are struggling with unemployment many are not even considering higher education.

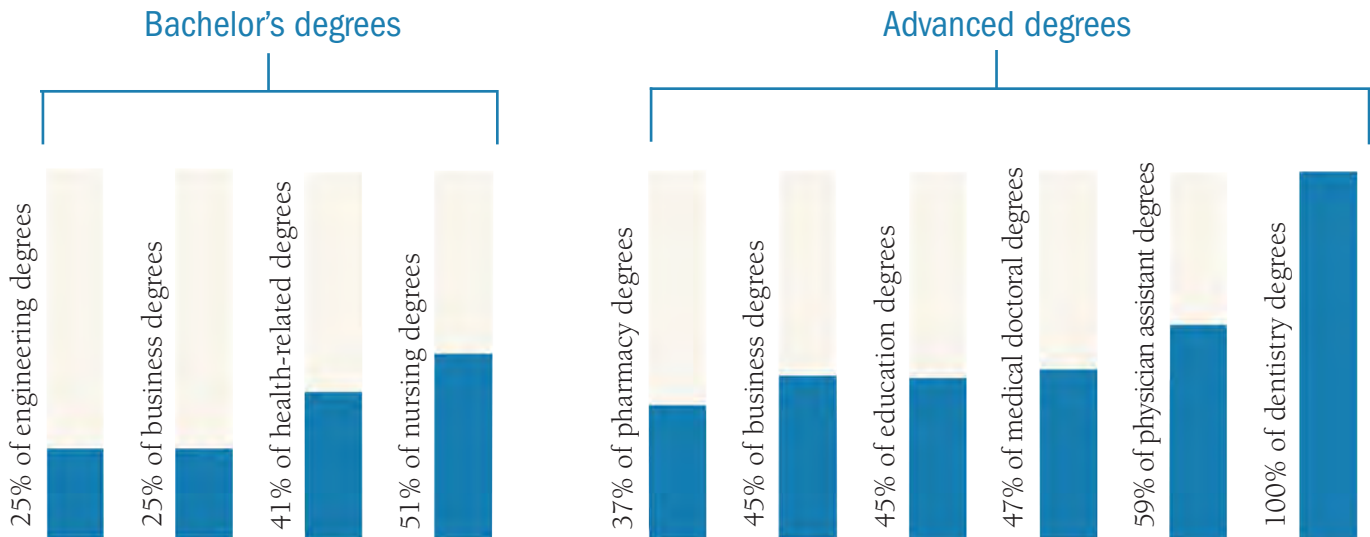
The Wisconsin Grant program, which began in 1965, empowers the individual Wisconsin students to pursue the career opportunities in their community for which

continued on page 7

- Alverno College
- Bellin College
- Beloit College
- Cardinal Stritch University
- Carroll University
- Carthage College
- Concordia University
- Edgewood College
- Herzing University
- Lakeland University
- Lawrence University
- Marian University
- Marquette University
- Medical College of Wisconsin
- Milwaukee Institute of Art & Design
- Milwaukee School of Engineering
- Mount Mary University
- Nashotah House
- Northland College
- Ripon College
- St. Norbert College
- Viterbo University
- Wisconsin Lutheran College

Did you know?

WAICU members produce **24 percent of all bachelor's degrees** and **35 percent of all advanced degrees** in the state. They also produce disproportionately high numbers of graduates in critical occupations. (Source: IPEDS, 2018-19)



Free FAFSA completion assistance

College Goal Wisconsin has added spring virtual workshops to assist families with the completion of the Free Application for Federal Student Aid (FAFSA). Go to www.collegegoalwi.org to register.



- March 4 at 11:30 a.m.
(Registration opens on February 24 at noon.)
- April 15 at 6:00 p.m.
(Registration opens on April 6 at noon.)

Attend a virtual college fair



Wisconsin Education Fairs (WEFs) will be held virtually with a chat feature on Wednesday, March 10 and Sunday, April 11.

- The fair will be held from 3-5:00 p.m.
- A financial aid presentation will be offered from 5-6:00 p.m.
- Students can visit the virtual booths anytime (without the chat option).

Visit the WAICU booth to learn more about Wisconsin's 23 private, nonprofit colleges and universities.

More information can be found at:
www.wefs.org

A presentation about WAICU-member colleges and universities is available at www.WisconsinsPrivateColleges.org. Requests for virtual presentations or questions may be directed to StudentAccess@waicu.org.



Save the dates! The 25th annual joint open house of WAICU members - **Wisconsin Private College Week (PCW)** - this year will be held in the form of virtual open house events and in-person events conducted following safety and health guidelines. Students, their families, and school counselors are invited to learn more about the unique benefits and opportunities available at each college or university.

Online registration for Wisconsin Private College Week will open in May: www.WisconsinsPrivateColleges.org/visit

New Resources www.WisconsinsPrivateColleges.org

- **Question Portal:** This feature allows students, parents, and school counselors to submit questions about Wisconsin's private colleges. Inquiries are filtered by WAICU and sent to the appropriate members to respond directly.
- **Graduate Program Snapshots:** This page highlights the graduate programs at WAICU members with introductory slides, brief videos, and admissions contact information. This information is also available for undergraduate programs on the College Snapshots page.



We Energies STEM Center at MSOE Creates Opportunity

MILWAUKEE SCHOOL OF ENGINEERING

The premier STEM destination for Milwaukee students of all ages is now open at Milwaukee School of Engineering. The We Energies STEM Center at MSOE was made possible thanks to the support of major partners We Energies, Rockwell Automation, and American Family Insurance. The center is home to all of MSOE's STEM outreach efforts and offers programs designed to introduce students to science, technology, engineering, and mathematics.

"In 2017, MSOE made a strategic investment in STEM outreach by establishing a dedicated department to grow, sustain, and develop a comprehensive STEM pipeline for all students in Milwaukee and beyond. Since then, more than 10,000 students from 150 K-12 schools have participated in our programs," said Dr. John Walz, MSOE president. "The We Energies STEM Center at MSOE is a game changer. We'll be able to reach more students than ever before."

MSOE and its partners each bring a

unique contribution to the STEM Center project, all to support the shared goal of providing opportunities to bring together schools, local companies, community groups, and organizations to create impactful, inclusive programming.

Employment in STEM-related jobs is expected to grow at 16 percent in the United States, far outpacing all other employment fields. In addition, jobs in STEM fields earn on average 10 percent more than jobs with similar education requirements. At the same time, there is a critical need for a more diverse workforce. Diversity and inclusion are an intentional and integrated part of the strategy for the STEM Center.

The 10,000-square-foot STEM Center features a flexible technology studio, design and development lab, machine tooling area,



K-12 students have a unique opportunity to learn about STEM fields thanks to the We Energies STEM Center at the Milwaukee School of Engineering.

and a FIRST Robotics playing field for teams to practice on before they compete. Students throughout the greater Milwaukee area have access to resources, mentoring, and hands-on, experience-based learning and one-of-a-kind experiences to get them hooked on STEM. ■

Lawrence partners with University of Wisconsin to provide skills development to local business community

LAWRENCE UNIVERSITY

Lawrence University and the University of Wisconsin's School of Business Center for Professional and Executive Development (CPED) launched a partnership in late 2020 to offer learning and development opportunities to the business community in the Fox Valley.

The courses are being delivered online during the COVID-19 pandemic but will shift to in-person sessions on the Lawrence campus when it is safe to do so.

Lawrence leadership first began talking with CPED Director of Corporate Partnerships Mark Seifert in late 2018, expressing interest in using Lawrence facilities and expertise to provide educational outreach in business skills development.

Lawrence President Mark Burstein called

the partnership a great opportunity for Lawrence to support area organizations in new ways.

"Many CEOs in northeastern Wisconsin have asked me over the past few years if Lawrence could offer learning opportunities for their staff that would be practical, tailored to their business needs, and locally delivered," Burstein said. "Teaming with CPED has allowed us to fulfill this need, relying on the expertise of the Wisconsin School of Business and Lawrence's local knowledge and talent."

The first session in the partnership, held earlier this year, drew participants from Jewelers Mutual, Johnsonville Sausage, Michel's Corporation, and Schreiber Foods.

The early responses from the course have been promising. It is traditionally a two-day immersive program. But with the onset of the COVID-19 pandemic, the program shifted to an online delivery, running

six weeks with 75-minute weekly learning sessions.

The interactive sessions offered participants the opportunity to grow their professional networks and get real-time feedback on their progress. The Live Learning Sessions were complemented by pre- and post-work activities that included an assessment tool, videos, readings, discussions, and a final project. ■



Warch Campus Center on the Lawrence University campus will be the site of upcoming skills development courses for the Fox Valley business community. (Lawrence University photo)

MEMBER HIGHLIGHTS

Viterbo University and Boys & Girls Club community partnership continues to flourish with scholarship program

VITERBO UNIVERSITY

In September 2005, the Amie L. Mathy Center for Recreation and Education opened on the Viterbo University campus. The facility, jointly owned and managed by Viterbo and the Boys & Girls Clubs of Greater La Crosse, was the first collaboration of its kind in the nation and the beginning of a unique and lasting community partnership.

The educational programs that have grown out of this relationship have greatly benefitted the youth of the neighborhood, many of whom come from diverse backgrounds and low-income households. Last year, that took on a whole new meaning for one outstanding young person in particular.

Danessa Brocks was the first recipient of a four-year, full-tuition Viterbo University scholarship for being named the Boys & Girls Clubs of Greater La Crosse 2020 Youth of the Year. The scholarship program has doubled this year as club members Rebecca Strittmatter and Nathaniel Powell



Rebecca Strittmatter and Nathaniel Powell were awarded full-tuition scholarships to Viterbo University. Standing are Viterbo University President Glenna Temple and Boys & Girls Clubs of Greater La Crosse Executive Director Jake Erickson.

were awarded full scholarships to Viterbo at a signing event on February 4.

“Congratulations to Becky and Nathaniel, both of whom I know will be wonderful additions to the Viterbo University community,” said Viterbo President Glenna Temple. “We look forward

to providing them with an outstanding education. This scholarship program fits the mission of both our organizations, but it’s especially great for area youth.”

As students at Viterbo, Strittmatter and Powell will remain connected to the Mathy Center Boys & Girls Club through work and volunteer activities. Both are looking forward to making a difference in the lives of members in

the same way they were helped over the years.

“Hearing the news of this unbelievable gift was something I will never forget,” Powell said. “It’s hard to put into words how thankful I am for this opportunity.” ■

Adaptability and flexibility are key for St. Norbert College faculty member

ST. NORBERT COLLEGE

The COVID-19 pandemic has been challenging for everyone. But Kim Smith has been up for the challenge thanks to hard work, a Ph.D., and a heart of gold.

Smith is assistant professor of communication and media studies at St. Norbert College in De Pere, Wisconsin.

Her research at St. Norbert focuses on the increasing presence of and demand for flexible work arrangements in the workplace. Perfect! If anyone was prepared to adapt and adjust to the pandemic, it was Smith.

“The pandemic has presented so many challenges that you can’t necessarily predict,” Smith said. “Flexibility is what I study. What do flexible work arrangements look like, and how do we capitalize? What businesses and people are better suited to flexible schedules? For me, I’m learning what my own research is supposed to be telling me.”

This is not the first time Smith has dealt with difficult circumstances. At 18

months old, she had several doctor appointments that led to open-heart surgery. It has been 33 years since the surgery, and Smith has not missed a beat.

“It’s actually really fascinating,” she said. “I wouldn’t know I had surgery if I didn’t have a scar. I was able to play sports my whole life and was basically able to do the things I wanted to do.”

Not everyone who goes through open-heart surgery like Smith is as fortunate. That’s why Smith and her family were honored in 2018 as a “Miracle Family” and were invited to take part in the student-run organization Dance Marathon at St. Norbert College. Miracle Network Dance Marathon raises funds and awareness for Children’s Hospital of Wisconsin. The students and families dance the night away, for 13.1 hours, so other children can experience a success story like Smith’s.

“It can be really devastating when you learn that there’s a condition that’s a big



Kim Smith, assistant professor at St. Norbert College, is flanked by her parents, Howard and Pam Smith, during Dance Marathon in 2018. (Photo courtesy of Kim Smith)

deal,” Smith said. “Dance Marathon was cool because we got to celebrate where I am now and also help other families. This is what the Children’s Miracle Network, the hospitals, and the doctors can help your child to accomplish.”

Smith has been teaching at St. Norbert College for five years. ■

MEMBER HIGHLIGHTS

Platypuses capture worldwide imagination Northland researchers make second illuminating discovery

NORTHLAND COLLEGE

Northland faculty and alumni/ae have created a well-needed bit of fun in the science world with their recent paper about glowing platypuses.

After their discovery of pink fluorescing flying squirrels in 2019, Northland professors Paula Spaeth Anich, Sharon Anthony, Michaela Carlson, Jonathan Martin, and Erik Olson and capstone students Adam Gunnelson and Allison Kohler kept shining their light.

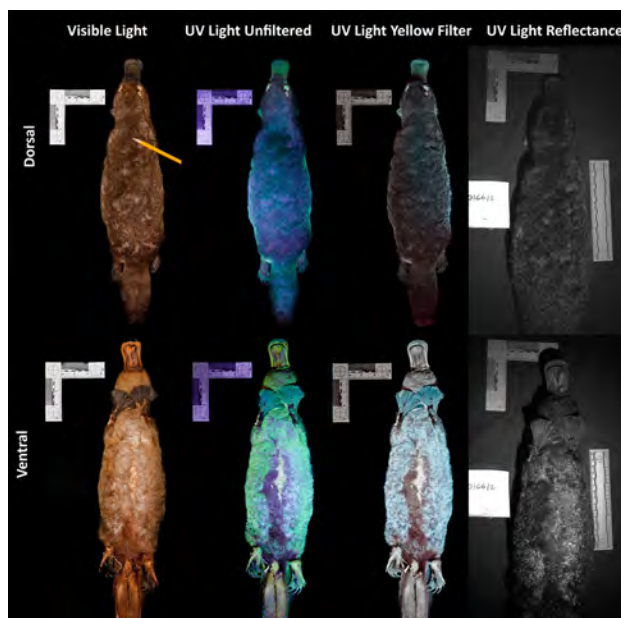
While on a research-finding trip to the Field Museum of Natural History in Chicago, Illinois, Anich, Martin, and Olson put a black light to preserved platypus specimens—and their brownish pelts glowed blue. They are one of the few mammals known to exhibit this trait and scientists are not sure why they do.

Their findings, published October 15, 2020 in *Mammalia*, captured the imagination of many and added even more intrigue to

the platypus. As *The New York Times* noted, “The last we checked on the platypus, it was confounding our expectations of mammals with its webbed feet, duck-like bill, and laying of eggs. More than that, it was producing venom. Now it turns out that even its drab-seeming coat has been hiding a secret—when you turn on the black lights, it starts to glow.”

In the months since their findings were published, 150 publications from thirty-plus countries have reported on the story—in multiple languages. The team has been approached by children’s book authors, radio hosts, podcasts, and even *The Daily Show* with Trevor Noah.

The research team has taken the unexpected spotlight in stride—one interview at a time—and with good humor. “It’s getting kind of crazy,” they agreed. ■



Northland College researchers discover that platypuses glow under black light. (Photo courtesy of Northland College, from Anich et al. 2020, *Mammalia*)

Alverno College launches the Thea Bowman Institute for Excellence and Leadership

ALVERNO COLLEGE

Guided by Catholic and Franciscan values, Alverno has launched the Thea Bowman Institute for Excellence and Leadership, which offers a rigorous and robustly crafted leadership development program for Black undergraduate students, including mentorship and high-profile internships.

The students, who receive full-tuition, four-year scholarships, are challenged throughout their education to explore their individual leadership styles, develop cultural competency, and learn how to effect organizational change.

“Thea Bowman Scholars are women who know, ‘I was sent here to do something great, and I’m determined to do that,’” says Ronett Jacobs ’98, director of the Bowman Institute. “We will work to light their candles so that they can then light the candles of others.”

In their first semester at Alverno, nine Bowman Scholars have stayed connected through weekly virtual discussions; longer virtual meetings are held monthly to explore leadership themes. They have engaged with their community, from presenting at virtual conferences to training to be poll workers. Above all, they have found strength in sisterhood.



Alverno’s new Thea Bowman Institute for Excellence and Leadership is a full-tuition scholarship program for Black undergraduate students with a strong desire to serve as leaders.

“Bowman is an amazing program. The conversations that we’ve had have been so uplifting and encouraging and just real, and I really appreciate it,” says Bowman Scholar Janel Riseling, Class of 2024. “I’m glad to know there are women behind me who I can always count on.”

Who was Sister Thea Bowman?

Alverno’s leadership institute honors the late Thea Bowman, a Black Franciscan nun from Mississippi who was educated in Wisconsin. Sister Thea held a Ph.D. in English and served as a professor at three universities. She gained national and international renown for her passionate advocacy for racial justice.

“We watched a video where Sister Thea was the only Black person in the room. Standing in front of hundreds of people, she shared her experiences, her beliefs, what she thought needed to change and how we could change it. She wasn’t afraid to stand up and speak up for what was right,” says Bowman Scholar Amira Adams, Class of 2024. ■

MEMBER HIGHLIGHTS

Lakeland University promotes VP to be 18th president

LAKELAND UNIVERSITY

Lakeland University promoted Executive Vice President Dr. Beth Borgen in October to be the institution's 18th president. Borgen becomes the first female to lead the institution in its 158-year history. Her selection was made by Lakeland's Board of Trustees following a national search. Borgen replaces Dr. David Black, who is retiring.

A first-generation college graduate who earned her Master of Business Administration from Lakeland in 2011, Borgen has led dramatic growth in Lakeland's fundraising efforts, as well as implementation of the university's award-winning Cooperative Education program in her 15 years at Lakeland.

"Change is constant, especially at a place like Lakeland," Borgen said. "We are well positioned for the future thanks to our innovation, creative problem solving, and collaboration, and I am prepared to make sure those strategies



Dr. Beth Borgen has been named 18th president of Lakeland University.

will continue to be part of our story.

"We will continue to grow our Cooperative Education program and student-run business venture, and we will also expand our relationships with the technical college system as we

position Lakeland as a school of choice."

Borgen has played a significant role in building relationships with community stakeholders and employers. She led Lakeland through the creation of its current strategic plan, which prepares to position the institution for declines in student populations by the middle of this decade that will challenge all institutions of higher learning.

She recently led a task force to fully implement Lakeland's Co-Op program, which for the last three falls has generated three of the largest incoming first-year classes in Lakeland's history.

Borgen's tenure begins as Lakeland readies for a \$26 million investment in its main campus, funded by a \$35.4 million low-interest loan from the U.S. Department of Agriculture Rural Development division. Lakeland will construct two new residence halls to serve first- and second-year students, the largest investment in the main campus in the institution's history. ■

Yearlong program for undecided students proves successful, grows by 56 percent Students now awarded \$1,000 scholarship upon enrollment

MOUNT MARY UNIVERSITY

When the Compass Year program launched in 2019, advisors Beth Felch and Katie Dougherty set out to provide strong resources and guidance to first-year students who have yet to declare a major.

This yearlong program for first-year students involves intensive career exploration through specialized courses, strategic advising, and personalized guidance that enables students to discover the best career and educational path for them.

The first cohort consisted of 16 students. Today there are 25 students enrolled in the program, representing a 56 percent student increase. Next year, Mount Mary anticipates enrolling 30 students in this program.

The semester starts with a three-day summer jump start to introduce students to their cohort and advisors. Each semester, students take career and major exploration

classes alongside their regular academic classes. As the semester concludes, students should feel confident enough to make a decision on their majors.

The premise of the program, to identify a major, has indeed proven successful. In the first semester of the program, over 62 percent of students chose their majors. By the end of the year, only one student decided to remain undecided, and she has continued to take advantage of the services Advising and Career Development offers.

This fall, Mount Mary began offering \$1,000 scholarships to students who enter the Compass Year program.

"I'm 100 percent confident that any




Sophomore Taylor Robinson of Milwaukee was undecided when she enrolled at Mount Mary. After a yearlong discernment process through the Compass Year program, she is pursuing a major in psychology.

woman who starts in Compass will come out set for success," said Kaitlyn McKnight, who completed her Compass Year in 2020. ■

there is demand and which attracts their interests. Throughout its history, Wisconsin Grants have attracted bipartisan support. Due to the economic impact of the COVID-19 pandemic on nearly all sectors of the economy, this will be a challenging budget cycle. The next few months will be an important time to emphasize the value of the Wisconsin Grants to state legislators, who will vote on the state budget. The Wisconsin Grants are an investment in students, and they play a critical role in meeting Wisconsin's workforce needs.

Sincerely,



Rolf Wegénke, Ph.D.
President



[1] IPEDS, Student Financial Aid Survey, 2018-19

WAICU BULLETIN BOARD

NOTABLE ACHIEVEMENTS

- Henry J. Predolin Foundation announced a grant of \$785,000 to **Edgewood College**. This grant will provide scholarships at Edgewood College for nearly 120 students and support lab equipment for the new Health Science-Respiratory Care program.
- **Elizabeth Taylor**, director of STEM at the **Milwaukee School of Engineering (MSOE)**, was named a *Milwaukee Business Journal* 40 Under 40 winner.
- Former two-time **Lakeland University President David Black** was named one of Sheboygan's 2020 People of the Year by *The Sheboygan Press*. This semester, Black is playing a key role in helping with some changes at Lakeland's Tokyo, Japan, campus prior to his retirement at the end of this academic year.
- The Blue House is the most important historical structure on the campus of **Nashotah House**. Constructed in 1842, it was the first structure built on the campus and residence of its founders. Through the generous gift of a donor, important work to restore the structural integrity of the Blue House and give it a new purpose is underway.
- The Council for Advancement and Support of Education (CASE) District V named **St. Norbert College** to the silver award category for its "Pursue What Matters" campaign.
- The late Harold and Arleen Vanden Heuvel named **St. Norbert College** as a partial beneficiary of their trust. That gift brings the couple's total donations to more than \$2.6 million during and after their lifetimes.
- **Edgewood College** earned a "Top Ten" 2021-2022 Military Friendly® School designation. **Herzing University, Marquette University, Milwaukee School of Engineering (MSOE)**, and **Viterbo University** also received Military Friendly® School designations.

- SC Johnson has announced it is donating \$5.5 million to Gateway Technical College

to create the SC Johnson STEM Scholars Pathway, a program dedicated to providing women, people of color, and those with limited means the opportunity to gain a four-year degree in STEM-related career fields. After completing their Gateway degree, students can enroll at the **Milwaukee School of Engineering (MSOE), Carthage College, or Concordia University** to complete their bachelor's degree.

- **Carthage College, Marquette University, and Northland College** have been named to the Phi Theta Kappa Transfer Honor Roll.
- **Dr. Dean Stewart**, executive director of the Center for Exceptional Leadership in the Schneider School of Business & Economics at **St. Norbert College**, was named Most Valuable Mentor for the Green Bay Packers Mentor Protégé Graduation Program.
- Thanks to a \$1 million gift from Rexnord Corporation, **Marquette University** announced plans to expand programming for its successful Bridge to Business initiative, which aims to develop career professionals through the College of Business Administration.
- **Meredith Hansen**, campus education and prevention project manager, and **Billy Korinko**, director of the Cassandra Voss Center, at **St. Norbert College** were named 2021 Current Young Professionals Future 15 award winners by Current Young Professionals of the Greater Green Bay Chamber.
- **Dr. Eryn Hassemer**, associate professor of biomolecular engineering at the **Milwaukee School of Engineering (MSOE)**, was named an Engineering Unleashed 2020 Fellow for her contribution to engineering education, specifically entrepreneurial engineering.
- Trustee emerita Mary Ellen and Dr. Scott Stanek, along with their family, have committed a gift of more than \$2 million to **Marquette University**. The gift supports multiple scholarship funds and includes both endowed funds and support for Marquette's Bridge to the Future fund, which has helped hundreds of students experiencing financial strain from the pandemic.
- **Milwaukee School of Engineering (MSOE)** received an S-STEM award from the National Science Foundation to support retention, academic success, and career pathways in mechanical engineering. Over five years, the award will fund scholarships to 15 full-time mechanical engineering students and provide support structures. **Dr. Subha Kumpaty**, Mechanical Engineering Department, and **Dr. Jan Fertig**, Humanities, Social Science, and Communication Department, serve as principal and co-principal.
- **Milwaukee School of Engineering (MSOE)** students won second place in the Design/Build Regional Competition and third place in the Preconstruction National Open Competition at the Associated Schools of Construction Region 3 Conference and Student Competitions.

APPOINTMENTS

- **Dr. Kalpa Vithalani**, executive director of technology transfer at **Marquette University**, has been named to the Wisconsin Technology Council.
- The **Concordia University** Board of Regents has selected **William Cario, Ph.D.** as the university's interim president.
- **John Walz, Ph.D.**, president of **Milwaukee School of Engineering (MSOE)**, has been elected to a three-year term on the Board of Directors for the National Association of Independent Colleges and Universities (NAICU).
- Two **Marian University** nursing students were elected to serve on the Wisconsin Student Nurses Association Board.

EDUCATIONAL COLLABORATIONS

- **Marian University** is partnering with SSM Health to enable its nearly 40,000 employees across sites in Illinois, Missouri, Oklahoma, and Wisconsin to pursue higher education at a discounted rate.

continued on page 8

“Try to learn something about everything and
everything about something.”

Thomas Huxley

WAICU: WISCONSIN'S PRIVATE, NONPROFIT COLLEGES WORKING TOGETHER FOR EDUCATIONAL OPPORTUNITY

THE WISCONSIN INDEPENDENT

Vol. 53 No. 1, Spring 2021

PRESIDENT & CEO

Rolf Wegenke, Ph.D.

SENIOR VICE PRESIDENT FOR ADVOCACY

Rebecca Larson

SENIOR VP FOR COLLABORATIVE SERVICES

Jennifer deHart

SENIOR VP FOR FINANCE & OPERATIONS

Liza Simon

DIRECTOR OF OUTREACH

Carrie Stahl, interim editor

The *Wisconsin Independent* is published quarterly by the Wisconsin Association of Independent Colleges and Universities (WAICU). To be placed on the free mailing list, contact:

WAICU
PO Box 272
Madison, WI 53701-0272
608.256.7761, fax 608.256.7065
www.waicu.org
www.WisconsinsPrivateColleges.org

Printed on recycled paper 

BULLETIN BOARD *continued from page 7*

- In 2020, **Nashotah House** launched The Chapter (nashotahchapter.com). It is an online gathering space for donors, alums, current students and staff, and prospective students. It hosts articles, a job board, a digital version of its Underwood Prayer Book Collection, and a new online course initiative. Nashotah House is partnering with churches and other organizations to make video lectures and other academic content produced by Nashotah faculty available for free.
- **Milwaukee School of Engineering (MSOE)** students designed and built 100 desks to provide K-12 students with proper workspaces for virtual learning. The desks were distributed to students in need through Milwaukee Public Schools and the Boys & Girls Clubs of Greater Milwaukee.
- The international STEM Learning Ecosystems Community of Practice (SLECoP) has selected the Greater Milwaukee STEM Ecosystem (GM-STEM) to join the global movement of leaders devoted to ensuring that STEM education is a priority for all in their communities with an emphasis on the equity envisioned to support a world-class STEM education. The GM-STEM application was led by the **Milwaukee School of Engineering (MSOE)**, the Milwaukee Tech Hub Coalition, Northwestern Mutual, and STEM Forward on behalf of the seven-county Greater Milwaukee region.

NEW ACADEMIC PROGRAMS AND PARTNERSHIPS

- A new 3+3 PharmD collaboration of the **Medical College of Wisconsin (MCW) Pharmacy School** and **Ripon College** allows dual degrees to be earned from Ripon and MCW in six years.
- In partnership with **Synergis Education**, **Alverno College** will offer the college's highly successful Direct Entry Master of Science in Nursing (DEMSN) program to students in Mesa, Arizona.
- **Carthage College** is launching a new Bachelor of Arts degree in Engineering Science in fall 2021. The program will integrate engineering training with other disciplines, such as business, environmental science, and data science.
- **Carroll University** is offering a new Master of Science in Behavioral Health Psychology for fall 2021 with the following concentrations: clinical assessment, adult and geriatric behavioral health, youth behavioral health, and applied research.

R.I.P.

- **Sister Ellen Lorenz, SSND**, sixth president of **Mount Mary University**, died on December 22, 2020.